



**PACP**  
PORTUGUESE AMERICAN CITIZENSHIP PROJECT

**A NON-PARTISAN INITIATIVE TO PROMOTE CITIZENSHIP AND CIVIC INVOLVEMENT**



**PORTUGUESE FRATERNIAL SOCIETY  
OF AMERICA  
STANISLAUS COUNTY, CA**

**EVALUATION  
OF  
THE 2012 ELECTIONS**

**PREPARED  
APRIL 30, 2013**

Supported by Luso-American Foundation  
Government of the Autonomous Region of the Azores  
Business and Community Leaders in the Portuguese American Community

# REPORT CONTENTS

|  |          |
|--|----------|
| <b>Statistics and Summary of Work</b>                | <b>2</b> |
| <b>Results</b>                                       | <b>2</b> |
| <b>Results Graphs</b>                                | <b>3</b> |
| Voter Turnout Summary                                | 3        |
| Voter Turnout by Age                                 | 4        |
| Voter Turnout by Age and Gender                      | 5        |
| Voter Turnout - November 2012 by Gender and Party    | 6        |
| Voter Turnout – 2008 vs. 2012 Presidential Elections | 7        |
| <b>Appendices</b>                                    | <b>8</b> |
| Registered Voters by Age and Gender                  | 9        |
| Registered Voters by Age and Party                   | 10       |
| Registered vs. Actual Voters by Age and Gender       |          |
| November 2012  | 11       |
| Registered vs. Actual Voters                         | 12       |
| Actual Voters by Gender and Party – November 2012    | 13       |
| Voted in both 2008 and 2012 Presidential Elections   | 14       |
| Voted in all last three elections                    | 14       |

## Key Statistics – 2012

Voter turnout data received from Stanislaus County Registrar of Voters, March 7, 2013.

### PFSA Stanislaus (*Stanislaus County in italics*)

- All Household Members registered to vote: 1,212 (222,947)
- Voter Turnout - June 2012: 52.2% (30.6%)
- Voter turnout – November 2012: 80.3% (67.5%)

## Summary of Work

The Portuguese Fraternal Society of America of Stanislaus County is one of 8 counties to participate in the Portuguese American Citizenship Project in 2012.

Postcards reminding PFSA members to vote were sent out for the November election.

## Results

PFSA Stanislaus voter turnout for the June and November 2012 elections was significantly higher than countywide turnout. The PFSA Stanislaus turnout for the June Primary Election was 52.2%, which was significantly higher than the Stanislaus County turnout of 30.6%. The PFSA Stanislaus turnout for the November General Elections was 80.3%, which was also significantly higher than the Stanislaus County turnout of 67.5%.

Voter turnout is significantly higher for PFSA Stanislaus members than Stanislaus County for all voters under 70 years of age and slightly higher for those 70 and older in the June election. Voter turnout is also higher for all age groups in the November 2012 election.

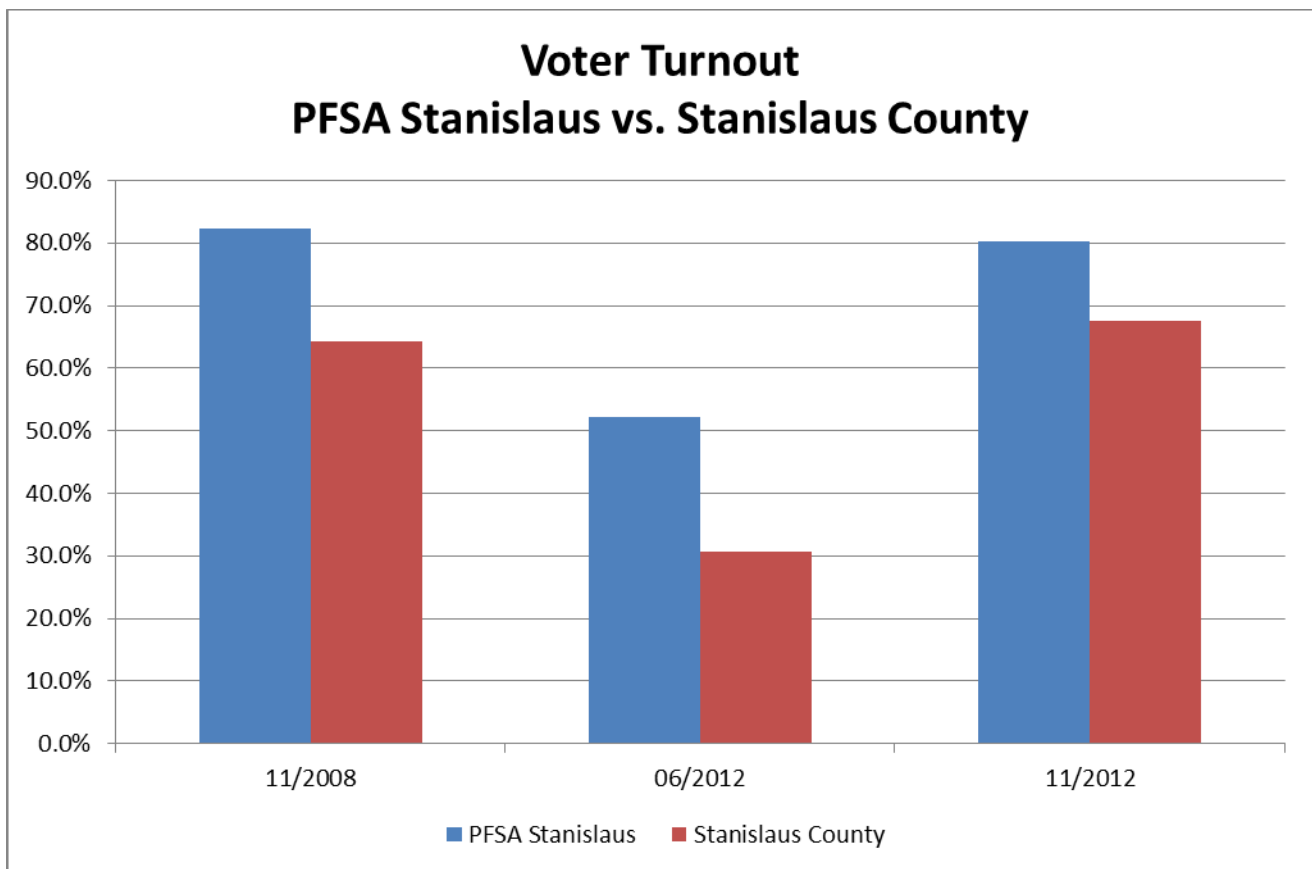
Women voters under age 50 had higher turnout than men in the November 2012 election, while male voters 50 and older had higher turnout than women. Turnout for all age groups and genders was higher for PFSA Stanislaus voters than for Stanislaus County voters.

More PFSA Stanislaus voters under age 50 are registered as Republicans than other parties, while more voters age 50 and older are registered Democrats. A high number of voters under age 30 are

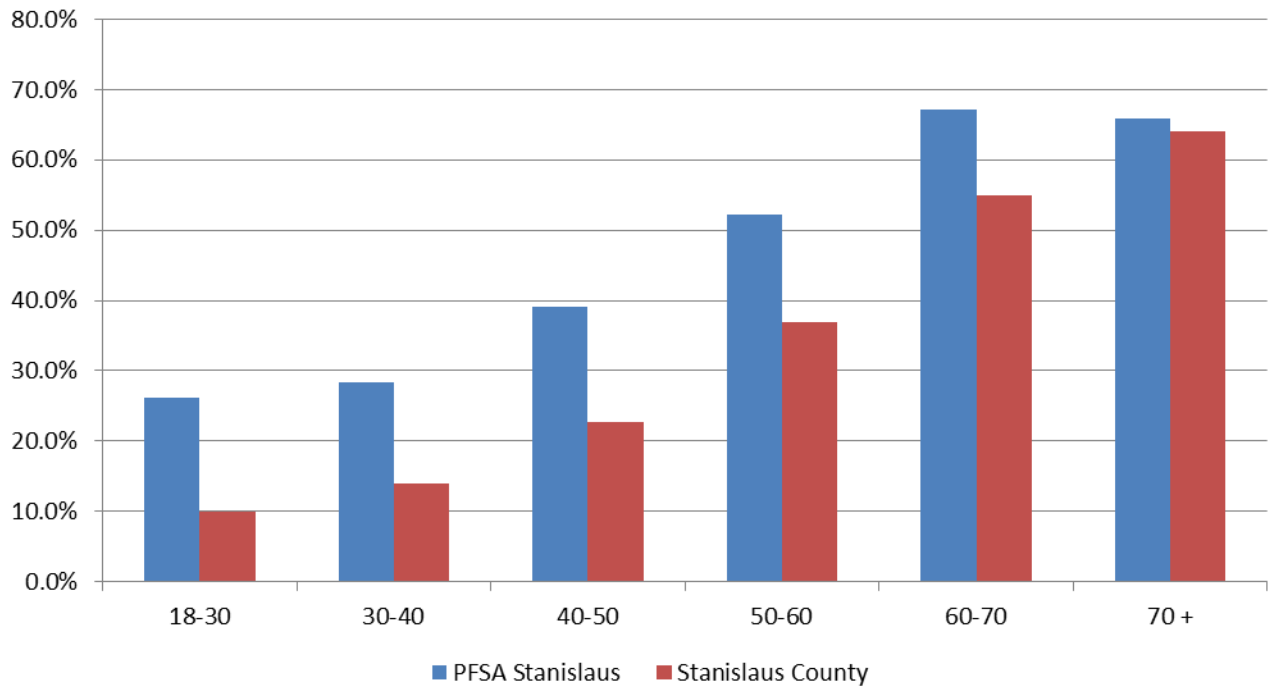
registered as either Independent or with other political parties in Stanislaus County while few Independents or members of other political parties are PFSA Stanislaus members.

The following graphs summarize voter turnout by age, gender and political party affiliation.

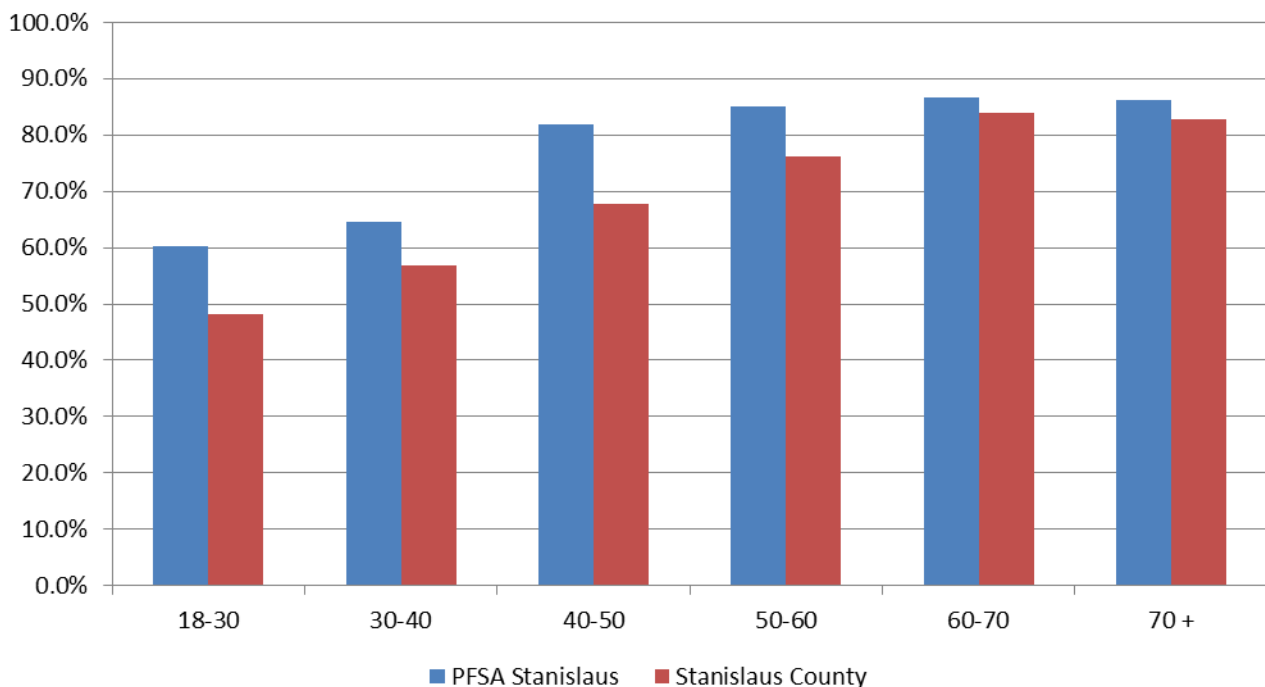
## Results Graphs



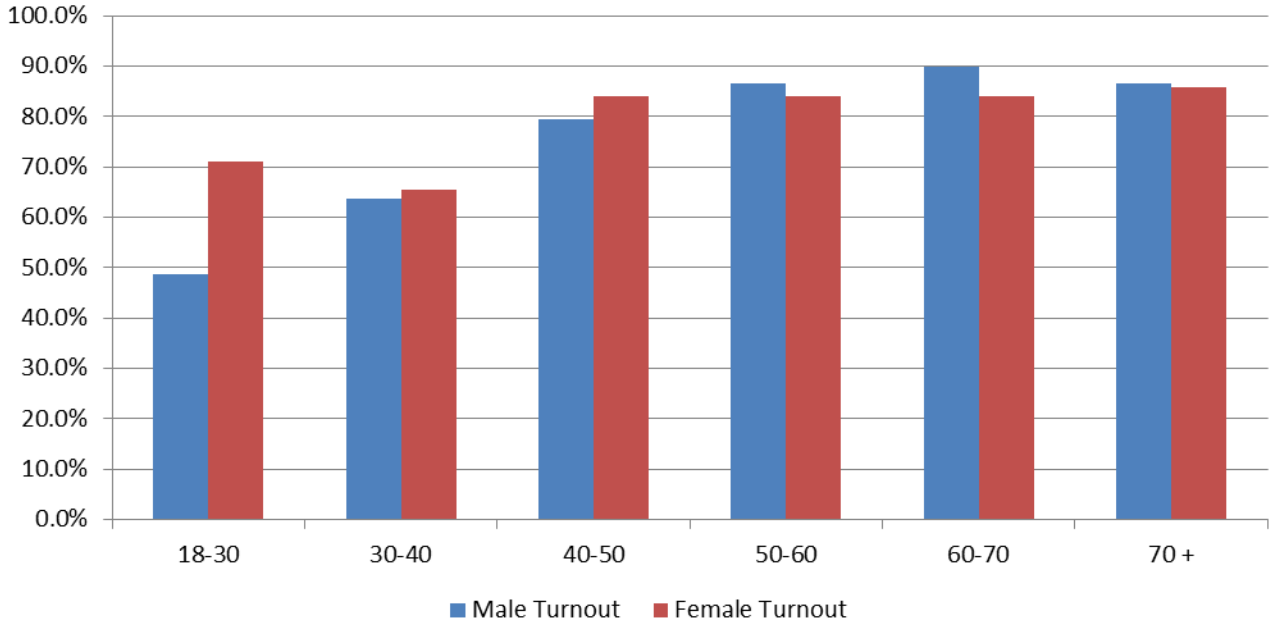
### Turnout By Age - June 2012 PFSA Stanislaus vs. Stanislaus County



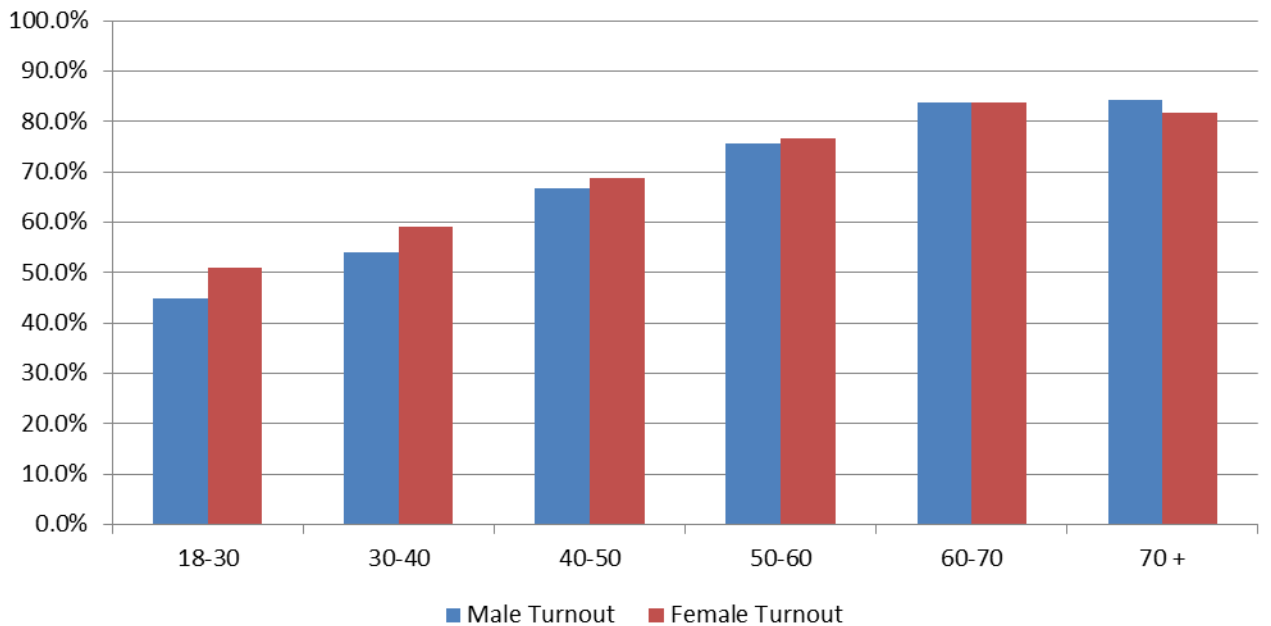
### Turnout By Age - November 2012 PFSA Stanislaus vs. Stanislaus County



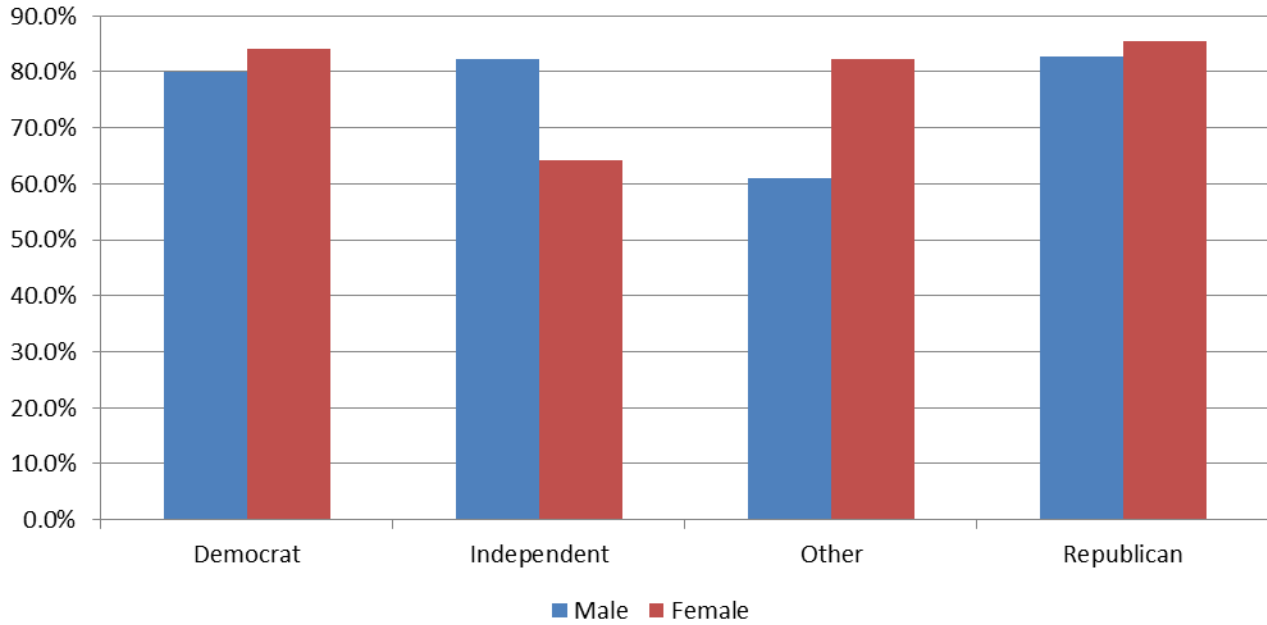
### Voter Turnout by Age and Gender November 2012 PFSA Stanislaus



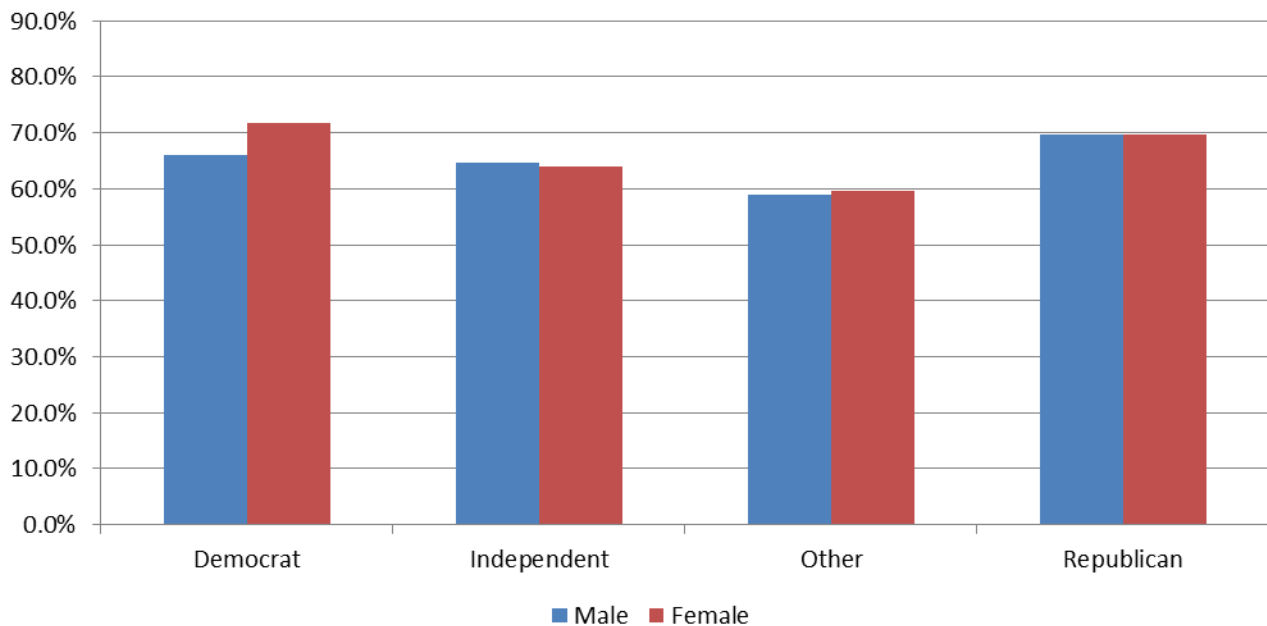
### Voter Turnout by Age and Gender November 2012 Stanislaus County



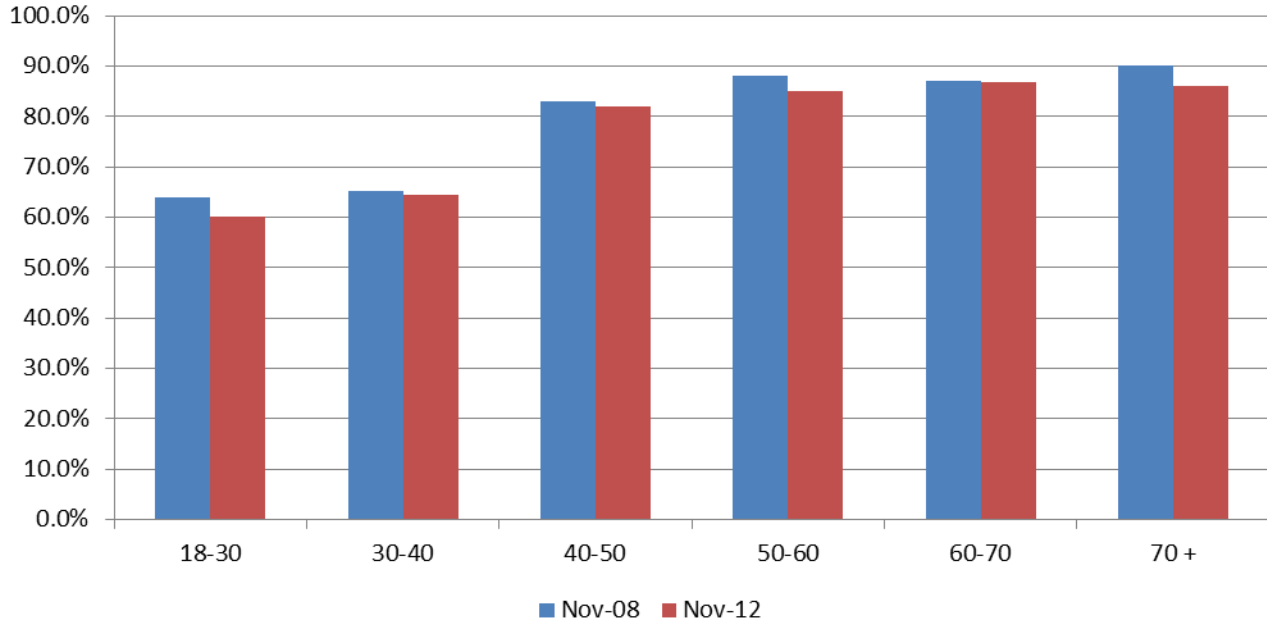
### Voter Turnout - November 2012 Election PFSA Stanislaus By Gender and Party



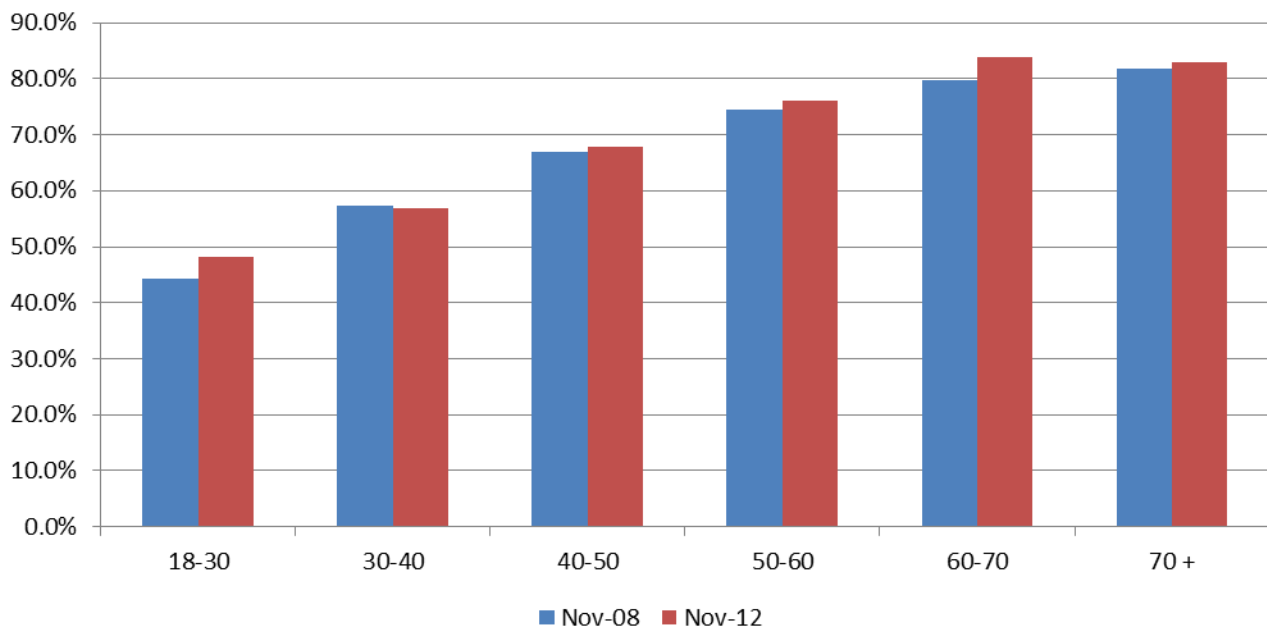
### Voter Turnout - November 2012 Election Stanislaus County By Gender and Party



**Voter Turnout  
2008 vs. 2012 Presidential Elections  
PFSA Stanislaus by Age**



**Voter Turnout  
2008 vs. 2012 Presidential Elections  
Stanislaus County by Age**





## **Appendices**

|   |           |
|---|-----------|
| <b>Registered Voters by Age and Gender</b>                | <b>9</b>  |
| <b>Registered Voters by Age and Party</b>                 | <b>10</b> |
| <b>Registered vs. Actual Voters by Age and Gender</b>     |           |
| <b>November 2012</b>                                      | <b>11</b> |
| <b>Registered vs. Actual Voters</b>                       | <b>12</b> |
| <b>Actual Voters by Gender and Party – November 2012</b>  | <b>13</b> |
| <b>Voted in both 2008 and 2012 Presidential Elections</b> | <b>14</b> |
| <b>Voted in all last three elections</b>                  | <b>14</b> |

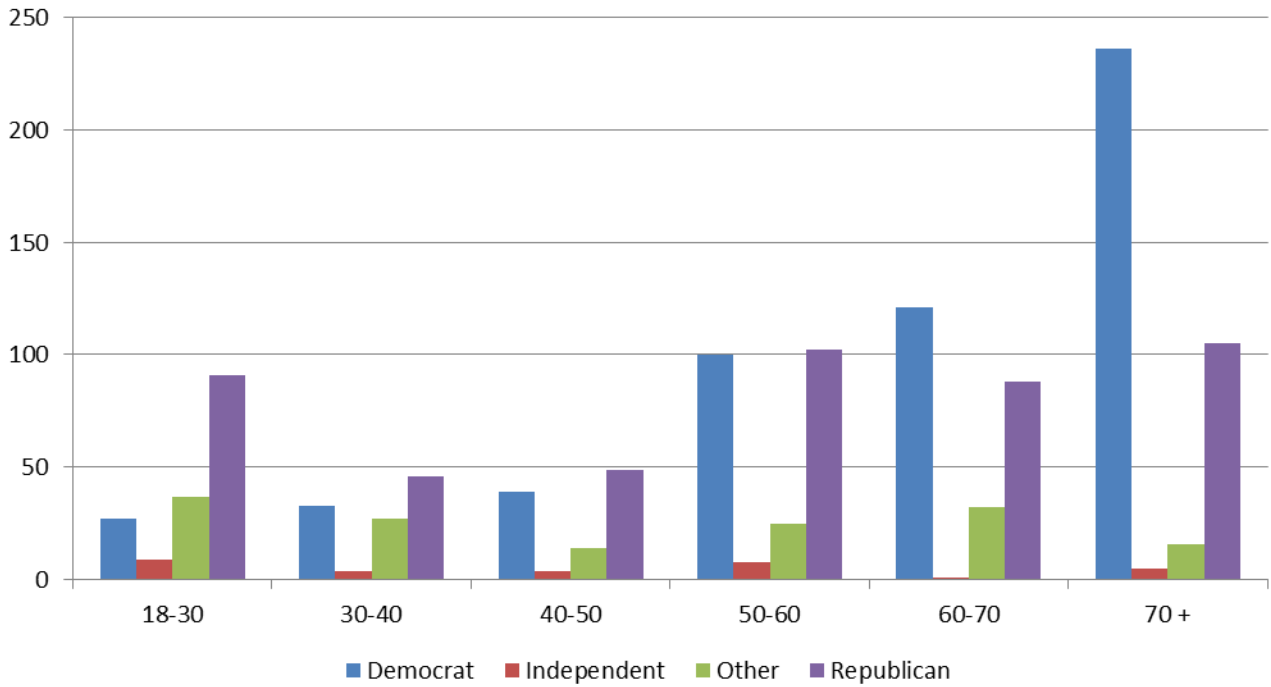
### Registered Voters by Age and Gender PFSA Stanislaus



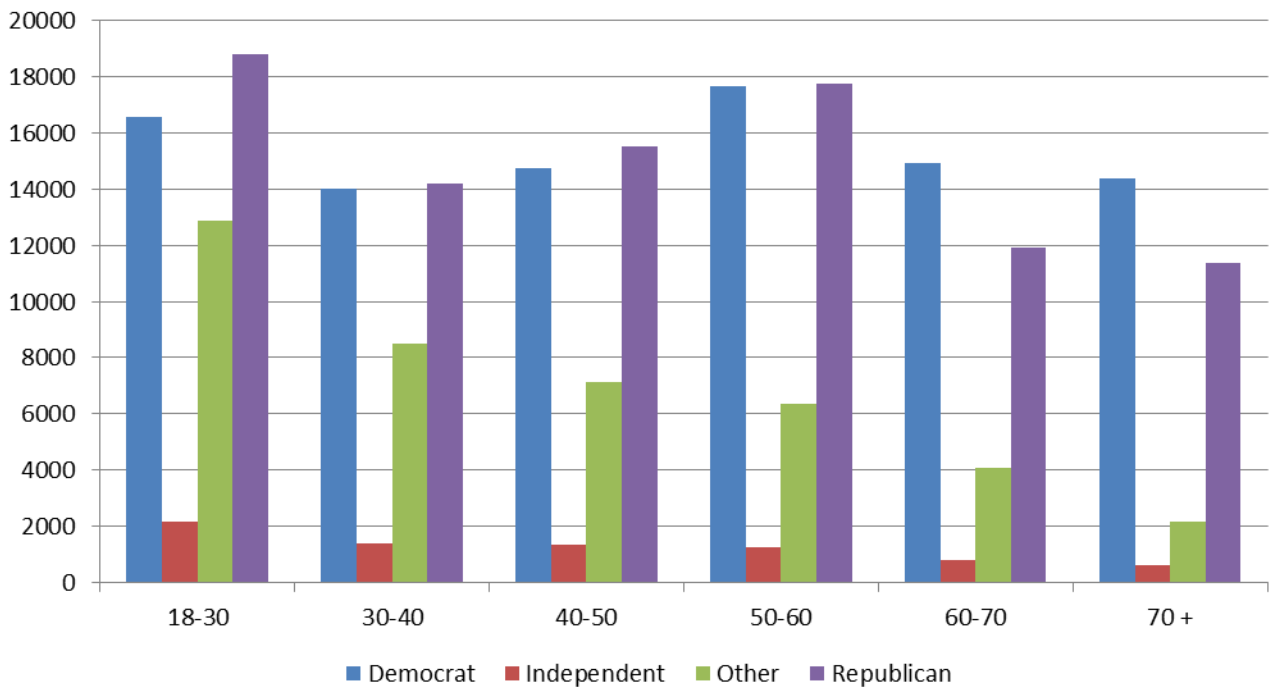
### Registered Voters by Age and Gender Stanislaus County



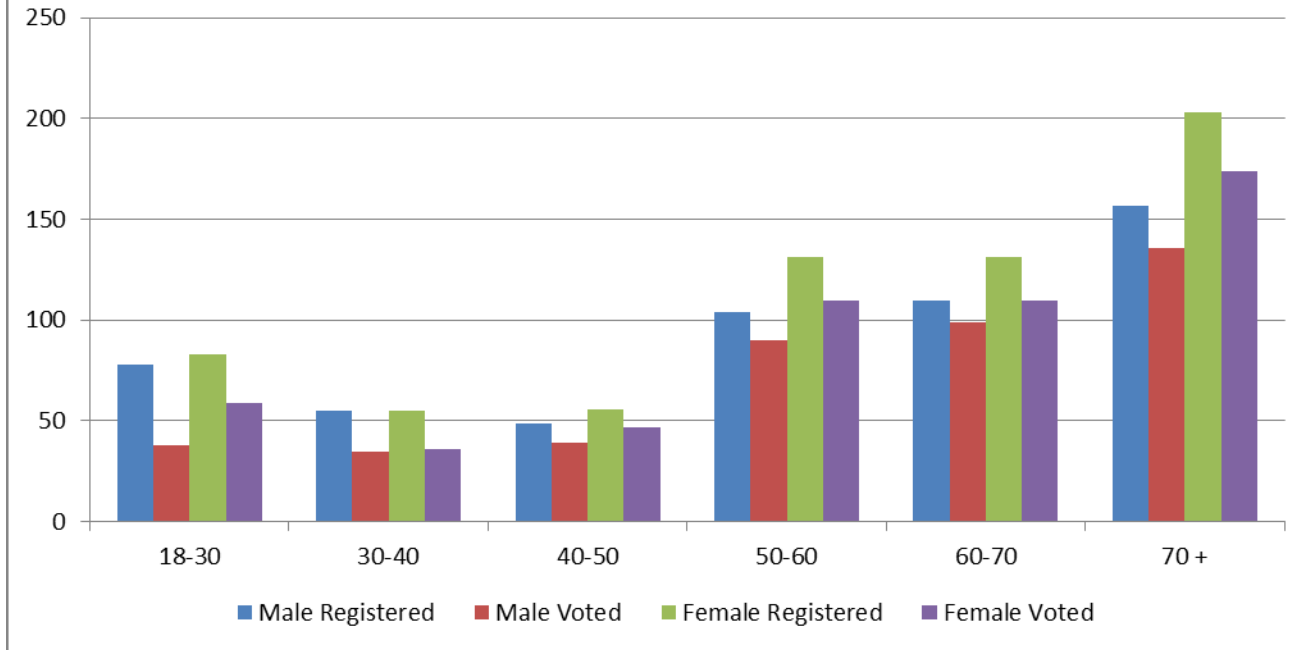
### Registered to Vote by Age and Party PFSA Stanislaus- November 2012



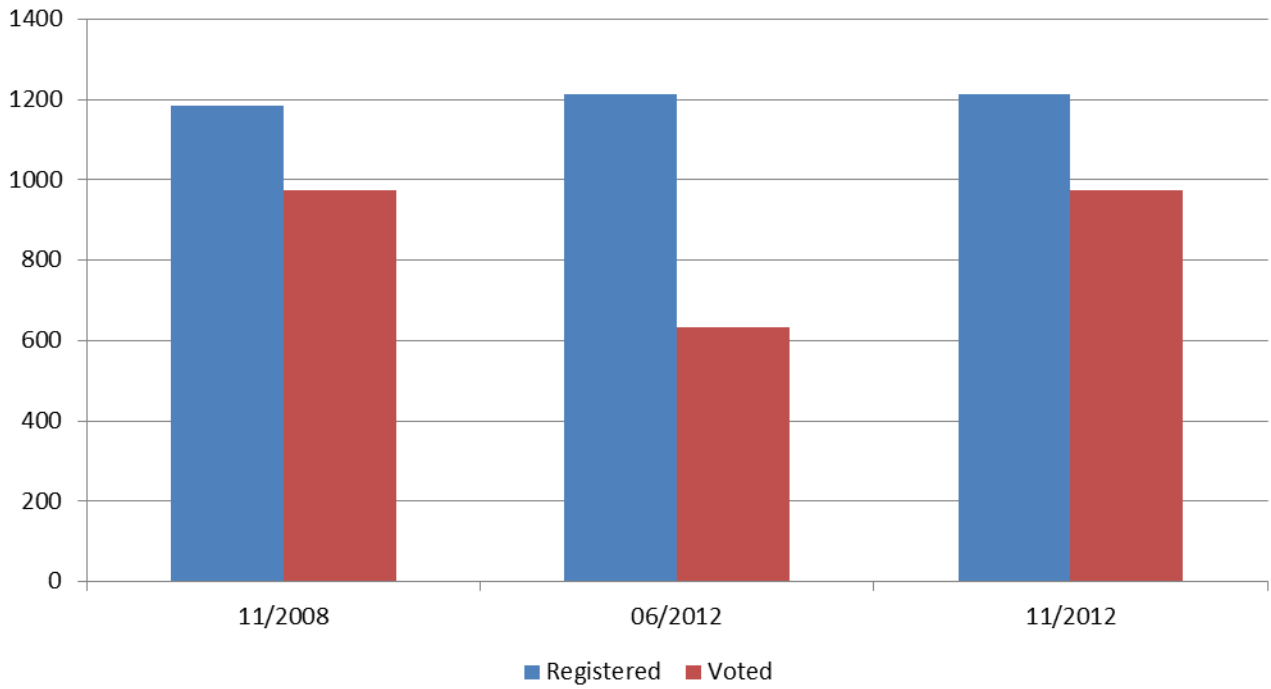
### Registered to Vote by Age and Party Stanislaus County- November 2012



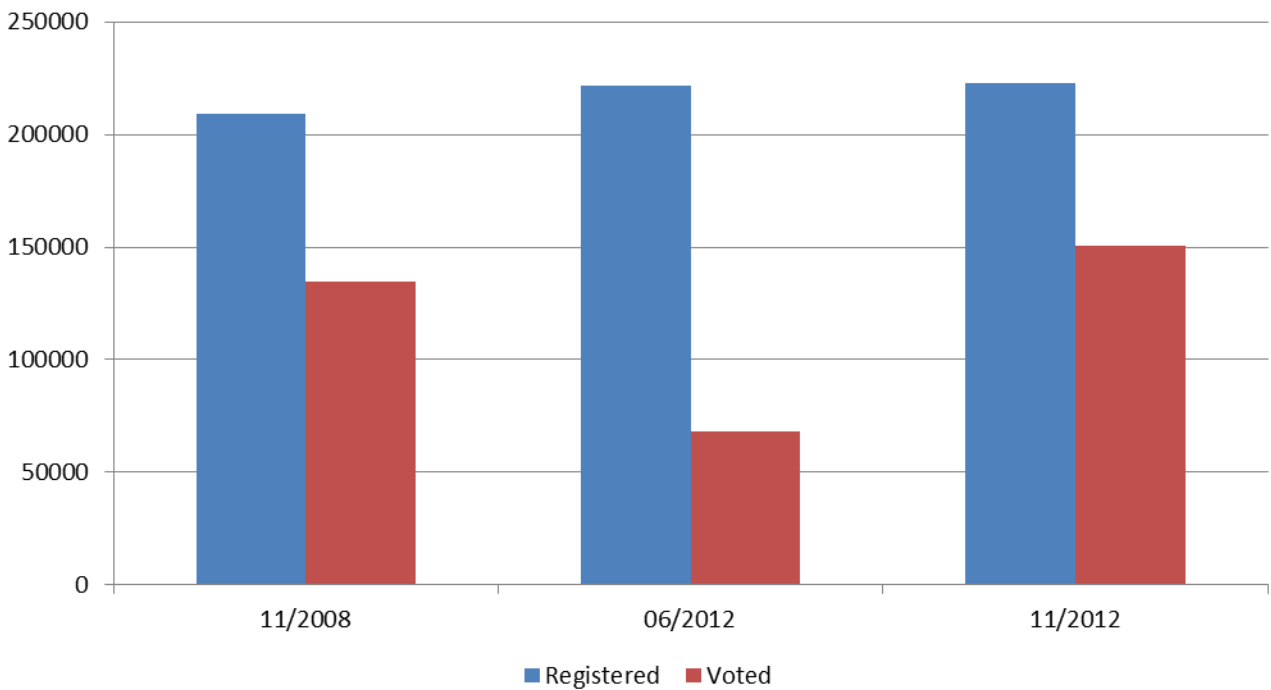
## Voter Turnout - November 2012 PFSA Stanislaus By Age and Gender



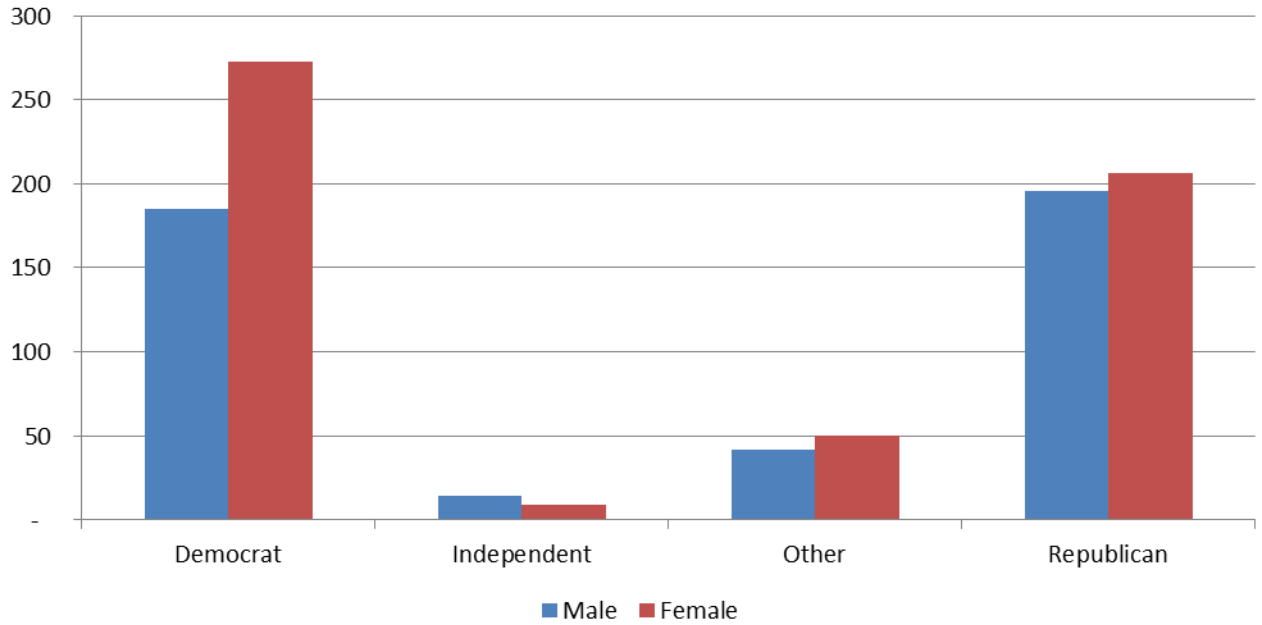
### Registered Voters vs. Actual Voters PFSA Stanislaus



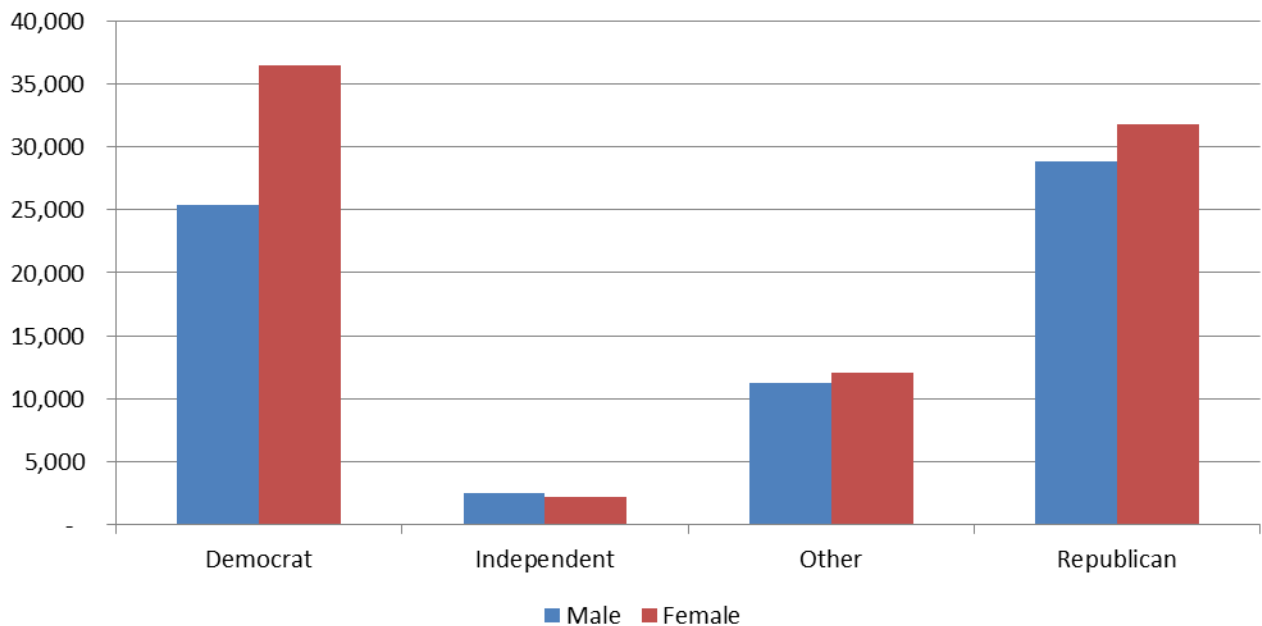
### Registered Voters vs. Actual Voters Stanislaus County



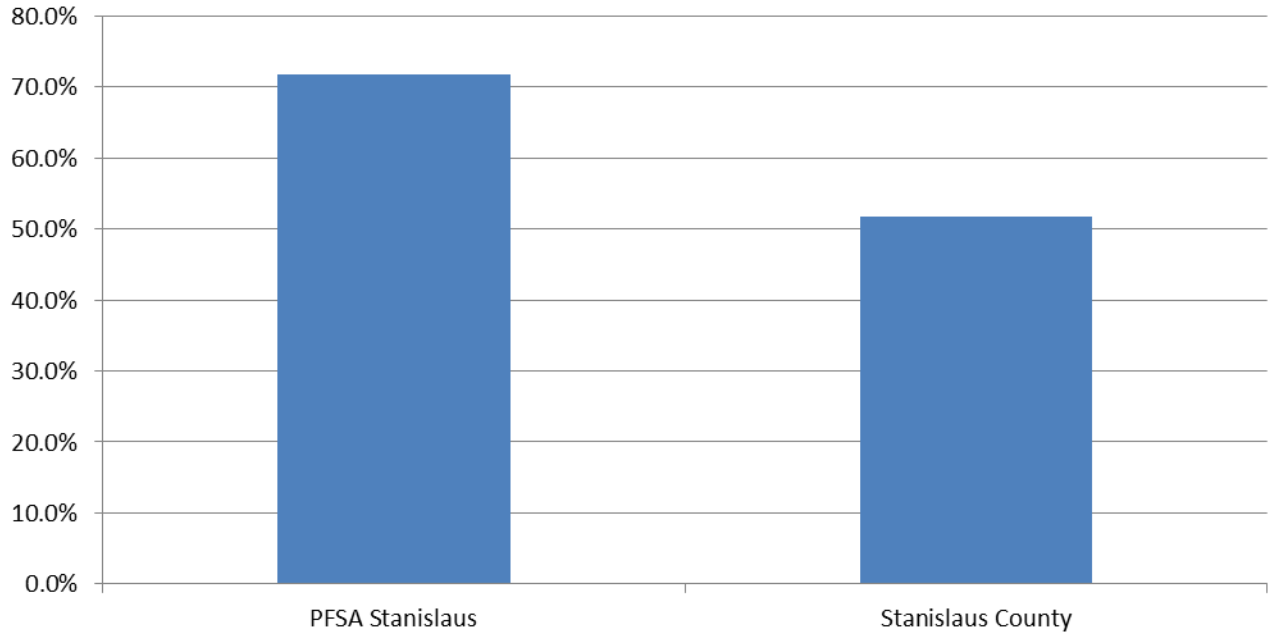
### Voted in November 2012 Election PFSA Stanislaus Actual Voters By Gender and Party



### Voted in November 2012 Election Stanislaus County Actual Voters By Gender and Party



**Voter Turnout**  
**Voted in Both 2008 and 2012 Presidential Elections**  
**PFSA Stanislaus vs. Stanislaus County**



**Voter Turnout**  
**Voted in Last 3 Elections**  
**PFSA Stanislaus vs. Stanislaus County**

